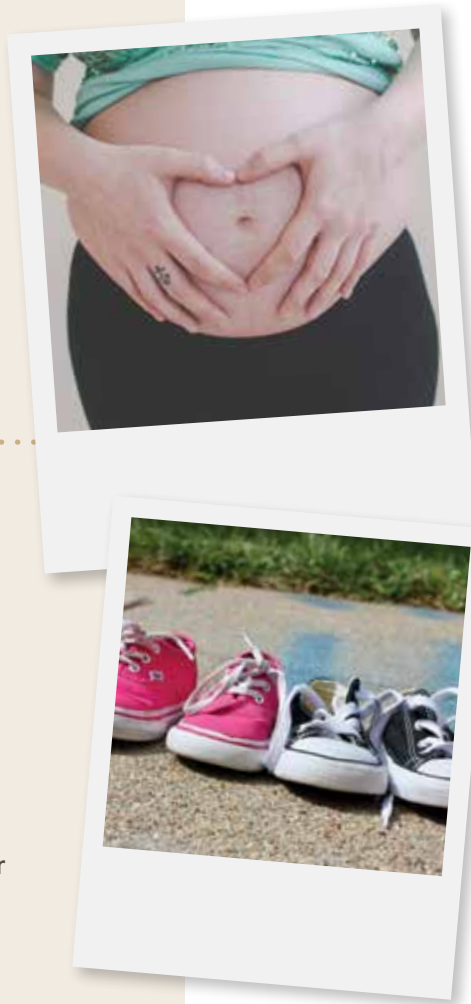


# 2016 ANNUAL REPORT\*

JANUARY 1 - JUNE 30

\*Jan 1 – June 30  
Bethlehem House made an operational change in the fiscal year, to end June 30th. This report is valid for dates ranging January 1, 2016 through June 30, 2016. The next annual report will incorporate 12 months beginning July 1, 2016.



## BY THE NUMBERS FAMILY LIFE PROGRAM

- 123** program inquiries
- 19** completed application
- 17** resided at BH
- 224** average days stayed
- 29** average age of residents
- 5** contemplating abortion or who cancelled
- 14** babies born at BH
- 3** women supported through CPS
- 3** reunified with children

### STAFF MEMBERS

**Executive Director**  
Holly Sak

**Family Life Director**  
Gina Tomes

**Aftercare Specialist**  
Liz Gelnette

**Family Life Coordinator**  
Tammi Hess

**Development Coordinator**  
Rachel Burns

**Financial Coordinator**  
Beth Mincer

**Overnight Coordinator**  
Melanie Bey  
Marci Thompson  
Nina Kampe

**The Humble Lily Boutique Manager**  
Cindi Horning

### 2016 BOARD OF DIRECTORS

**President**  
Kevin Bartak

**Vice President**  
Tony Krings

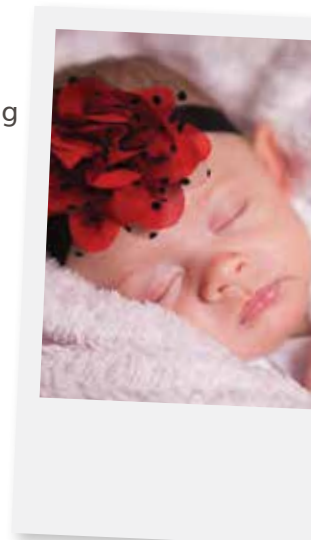
**Secretary**  
Mary Pat Sacco

**Treasurer**  
Dick Muller

**Members at Large**  
Mike Bojanski  
Deacon Terry Ficene  
Sister Patricia Forret  
Richard Gilloon  
Father Lloyd Gnirk  
Steve Knight  
Dr. Ralph Kramper  
Linda Maher  
Ernie Mascarello  
Craig Vavak

## AFTERCARE PROGRAM

- 216** women who have resided at Bethlehem House
- 20** enrolled in Aftercare
- 30** children benefitting from Aftercare
- 40%** forwent government assistance
- 90%** maintain stable, independent living
- 80%** employed
- 40%** working on GED or college goals
- 80%** have their own automobile
- 45%** connected to a faith community



# BY THE NUMBERS

## FINANCE AND CAREER

*Of those living on campus in 2016,*



**100%**

had opportunity to attend 65 classes at BH with its 40 educational and community partners



**100%**

found employment



**50%**

Enrolled in GED or college courses



**50%**

purchased a car



**88%**

achieved financial responsibility

## HEALTH AND WELLNESS

**50%** battled drug or alcohol addictions

**100%** were physically or sexually abused in their past

**100%** shared with staff their struggle with mental health

**100%** matched to therapist

**100%** matched with a visiting nurse

**50%** paired with medical advocate

**100%** sought monthly spiritual direction



# 2016 HIGHLIGHTS

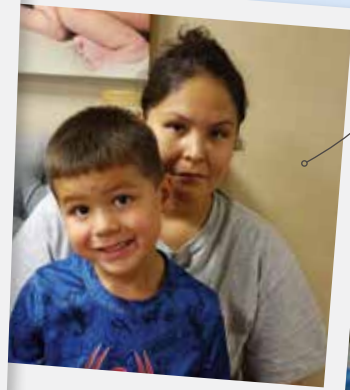
mentoring moms make a difference



Johnetta's new car!



reunification is beautiful



BH Scholarships change lives!



over 1000 hours of time donated by volunteers



BH director accepted award in service to women

financial literacy graduation



2016 BH Golf Scramble raised \$26,400



in-kind donations totalled \$10,000 per month

family fun day for graduates

2017 INITIATIVES:

# On the Horizon

## CAMPUS EXPANSION INITIATIVE:

Our campus is growing. There are exciting plans in our neighborhood to construct income-sensitive apartment units and community use meeting space in buildings adjacent to Bethlehem House. Apartments will answer the need for affordable housing for graduates, potentially providing future graduate families opportunities to stay close to the resources offered through Bethlehem House's Aftercare pathways.

Other campus needs include formation of a parking lot and storage garage. Parking on the street is limited and insufficient for the needs of residents. In addition, the storage garage will benefit families in the community through efforts to secure donated home furnishings and beds. Saving money during the earliest stages of self-sufficiency maintains bridges that sustain long-term independence. Fundraising efforts are underway to fund the \$41,000 needed for our campus expansion project.

## THREE KEYS SCHOLARSHIP INITIATIVE:

BH residents and graduates are offered scholarship opportunities that improve access to vehicle ownership, safe housing security deposits, and education assistance.



## SPECIAL THANKS TO OUR 2016 CORPORATE SPONSORS

Baxter Auto  
Lang Painting Group  
Sisters of Mercy West  
Midwest Community  
GMS Benefits Inc.  
Encore Energy  
V and R Rentals  
Wheatfields Eatery and Bakery  
US Bank  
Kiewit  
Lutz  
The Giving Lake Ranch  
The Benefit Group  
Orion  
Primary Care Physicians  
WealthMARK  
The Knights of Columbus  
Council #7740  
Lamson Dugan & Murray LLP  
Reruns R Fun

## In recognition to our Gold Star 2016 Sponsors (\$5000+)

John and Cathie Fullenkamp  
Knights of Columbus  
St Vincent DePaul  
Walkup Tree Service  
World Herald Goodfellows  
Charities, Inc  
Daniel and Marguerite Young

THANK YOU

# DONORS

## MONTHLY DONORS MAKE A HUGE DIFFERENCE AT BETHLEHEM HOUSE

**BEDROCK BUILDER:** Consider becoming a Campus Bedrock Builder. An ongoing gift of \$10 per month helps BH create a strong foundation for all of our programs, and enable growth and expansion projects to help more families in the Omaha area! For more information on how to become a bedrock builder contact us at [development@bethlehemhouseomaha.org](mailto:development@bethlehemhouseomaha.org)

**CENTURY CLUB MEMBERS:** Those committed to gifting Bethlehem House with \$100 or more annually. 409

**PLANNED GIVING:** Our Planned Giving Program includes a variety of options that will meet Bethlehem House's changing needs now and into the future. Create your legacy through current, ongoing gifts or through future gifts. To schedule a tour of the campus, or to discuss planned giving, contact Holly at [director@bethlehemhouseomaha.org](mailto:director@bethlehemhouseomaha.org) or by phone 402-502-9224.

*Stay connected by subscribing to our newsletter and mailings from the website [www.BethlehemHouseOmaha.org](http://www.BethlehemHouseOmaha.org) Follow us on Facebook or Twitter.*



### MISSION STATEMENT

Bethlehem House's family-centered residential care setting provides a place of hope and empowerment for women, pregnant and in crisis, to choose life for themselves and their unborn children.

Guided by our Catholic faith, and in conjunction with multiple community partners, Bethlehem House provides women, regardless of their faith preference, with residential and aftercare pathways for attaining quality pre and post-natal care, essential parenting skills, and economic security through education and employment.

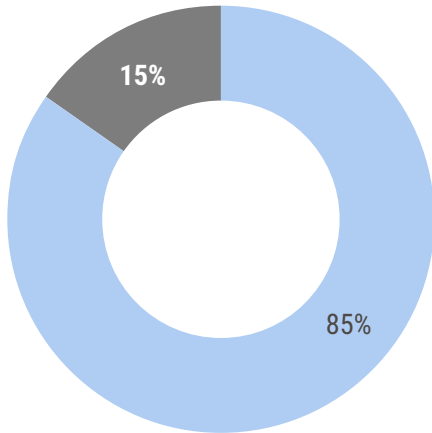
# INCOME & EXPENSES

BY THE NUMBERS

## FINANCE REPORT\*

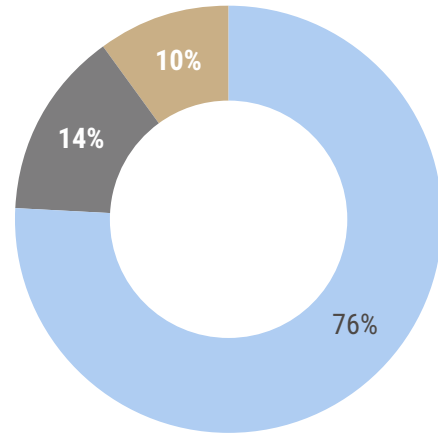
JANUARY 1 – JUNE 30, 2016

TOTAL INCOME  
**\$173,451**



- Contributed Support
- Events

TOTAL EXPENSES  
**\$213,414**



- Program
- Management & General Expenses
- Fundraising

## Humble Lily Finance Report

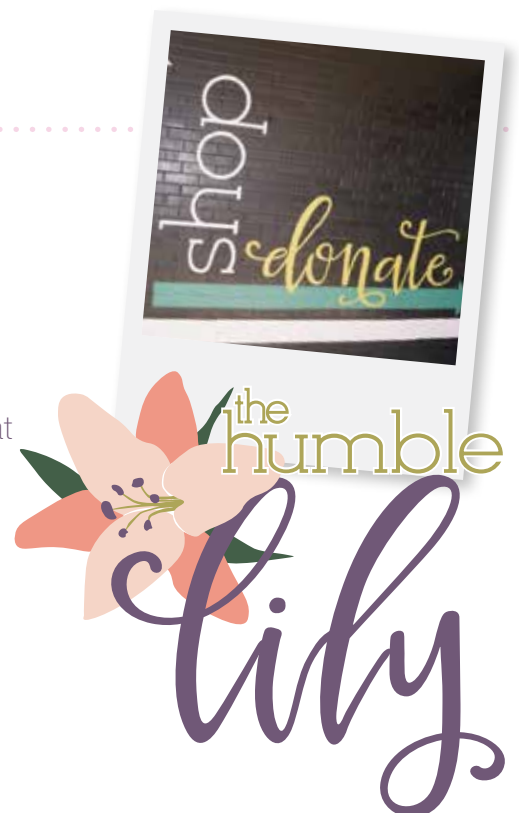
The Humble Lily Boutique, located at 2580 South 90th Street, opened in October 2015 in a strategic effort to raise awareness and funds for Bethlehem House. The brand features high-end resale of women's clothing and accessories, a business plan that has proven successful through strong community support. From January to June, The Humble Lily Boutique saw an estimated 4,000 shoppers, whose donations and purchases directly support the mission of Bethlehem House. Efforts are maximized through a small staff, coupled with countless volunteers.

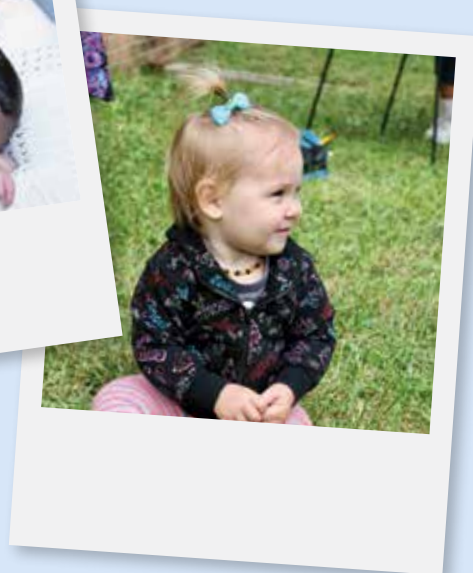
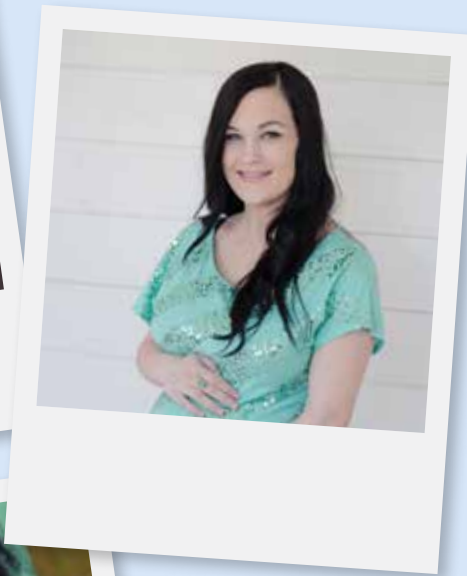
**\$92,278**

Income

**\$88,600**

Expenses





2301 SOUTH 15TH STREET  
OMAHA, NE 68108-3945